

Netaji Nagar Day College

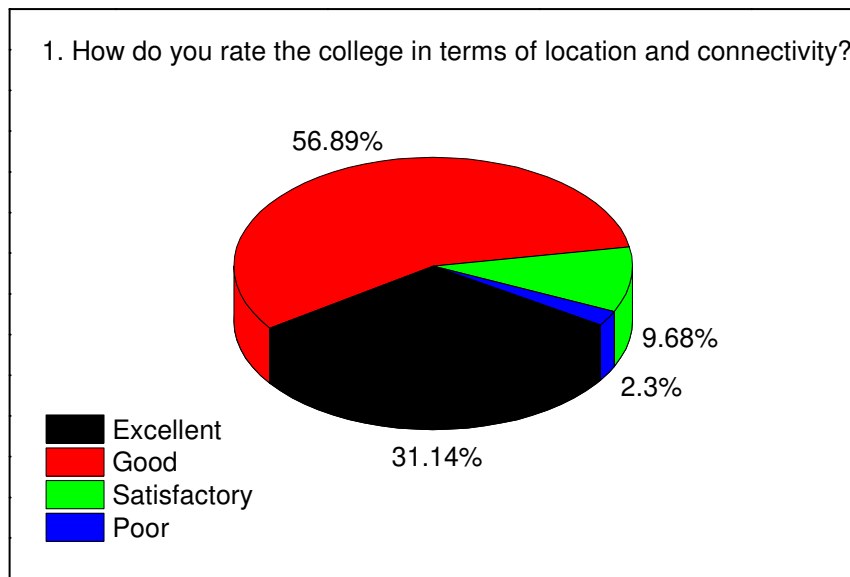
Students Feedback Analysis Sheet
Session: 2020-21
(Semester III & V of B.A, B.SC, B.Com Students)

Total Responses: **685**

(Student Assessment of College)

1. How do you rate the college in terms of location and connectivity?

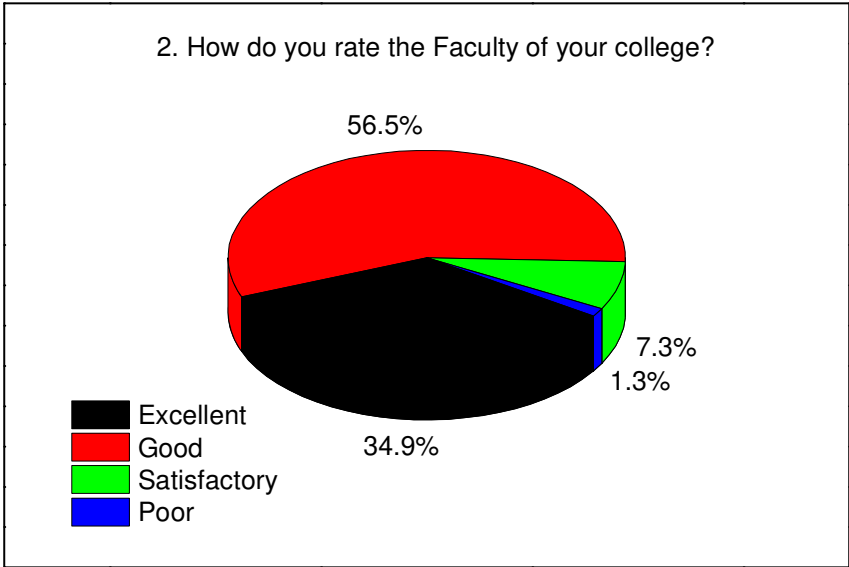
	Excellent	Good	Satisfactory	Poor
%	31.14	56.89	9.68	2.3



2. How do you rate the Faculty of your college?

	Excellent	Good	Satisfactory	Poor
%	34.9	56.5	7.3	1.3

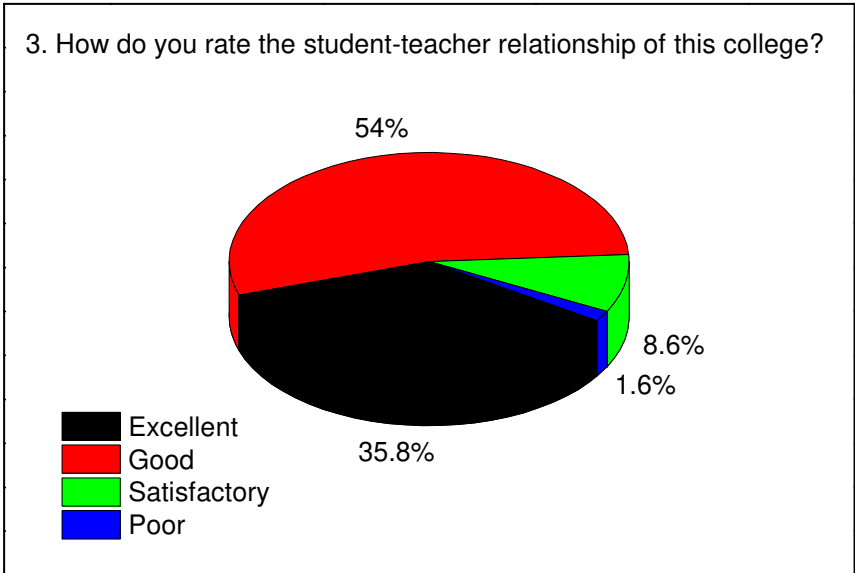
2. How do you rate the Faculty of your college?



3. How do you rate the student-teacher relationship of this college?

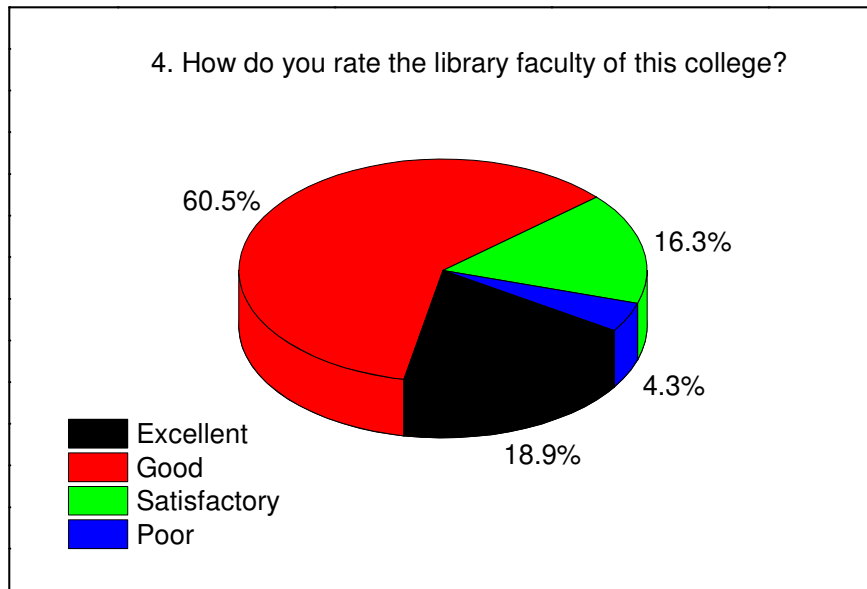
	Excellent	Good	Satisfactory	Poor
%	35.8	54	8.6	1.6

3. How do you rate the student-teacher relationship of this college?



4. How do you rate the library facility of this college?

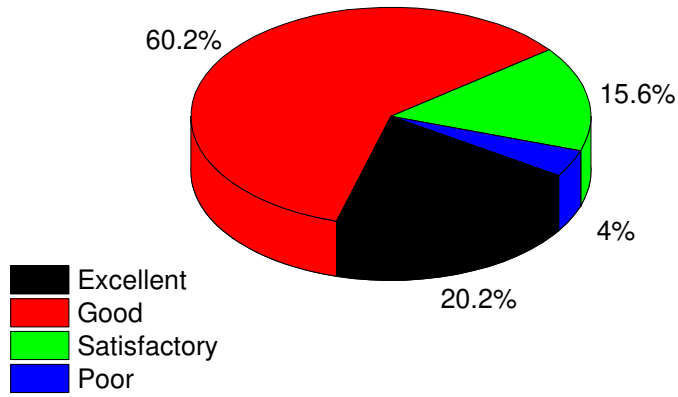
	Excellent	Good	Satisfactory	Poor
%	18.9	60.5	16.3	4.3



5. How do you rate the administrative Staff of this institution in terms of their helpfulness?

	Excellent	Good	Satisfactory	Poor
%	20.2	60.2	15.6	4.0

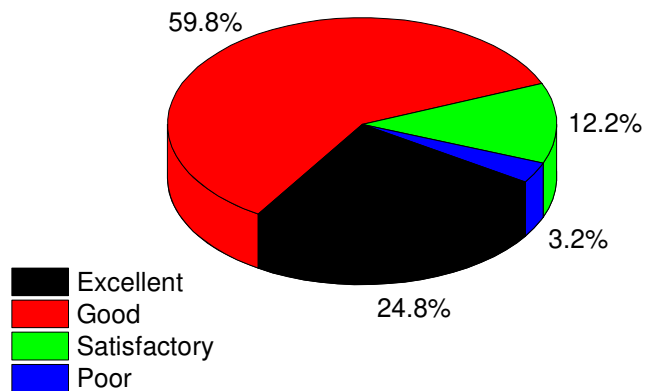
5. How do you rate the administrative staff of this institution in terms of their helpfulness?



6. How do you rate the role of the college in encouraging students in extra-curricular activities?

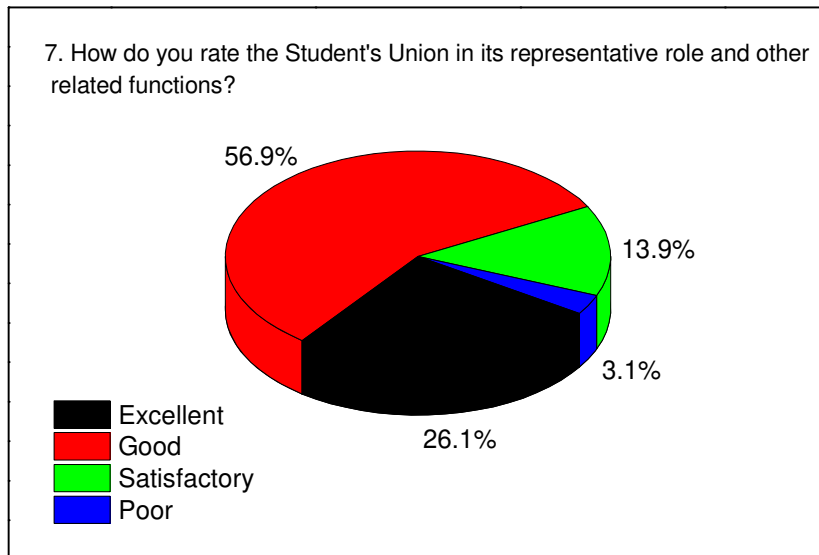
	Excellent	Good	Satisfactory	Poor
%	24.8	59.8	12.2	3.2

6. How do you rate the role of the college in encouraging students in extra-curricular activities?



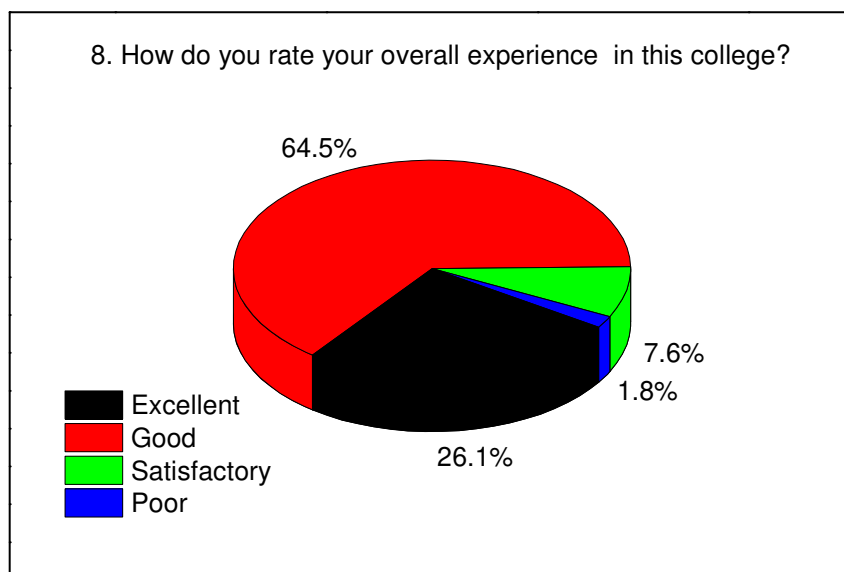
7. How do you rate the Students' Union in its representative role and other related functions?

	Excellent	Good	Satisfactory	Poor
%	26.1	56.9	13.9	3.1



8. How do you rate your overall experience in this college?

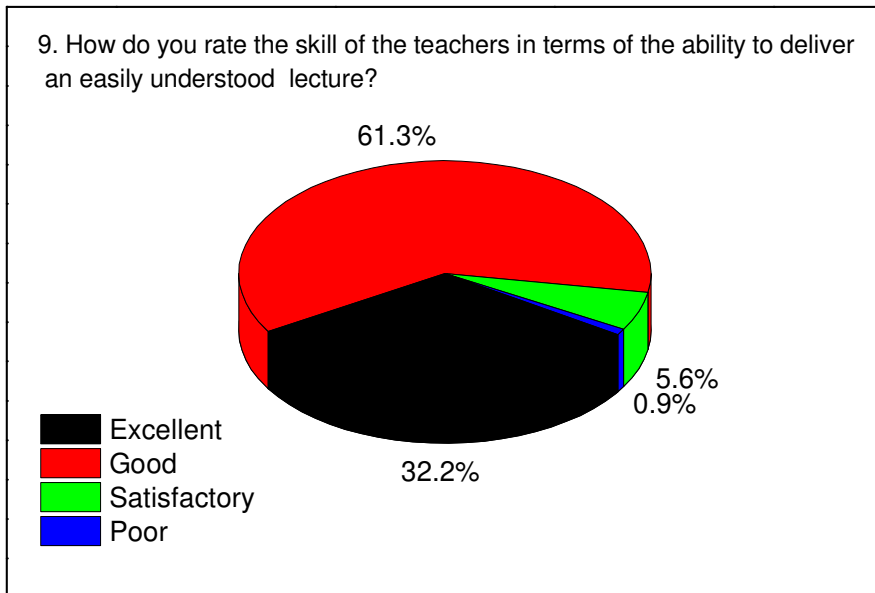
	Excellent	Good	Satisfactory	Poor
%	26.1	64.5	7.6	1.8



Student's Assessment of Teacher

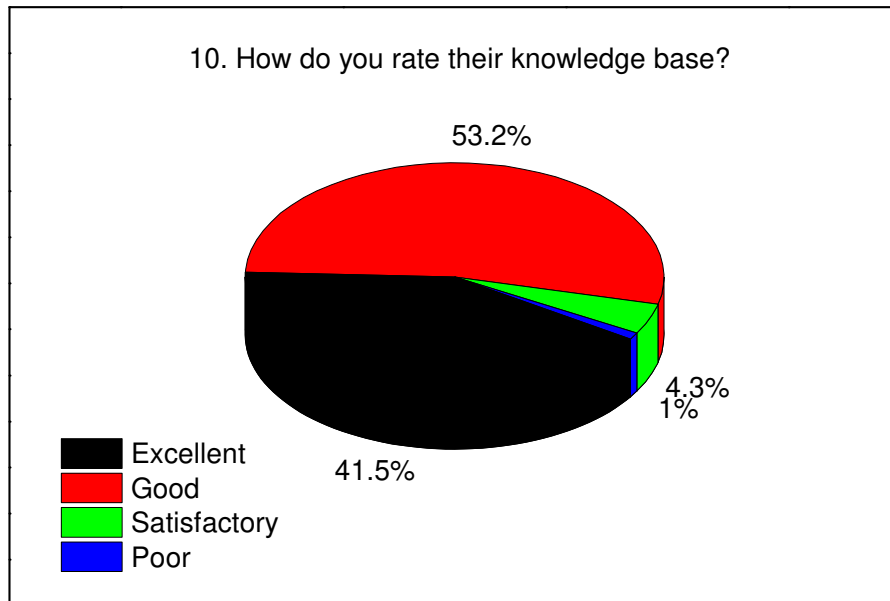
9. How do you rate the skill of the teachers in terms of the ability to deliver an easily understood lecture?

	Excellent	Good	Satisfactory	Poor
%	32.2	61.3	5.6	0.9



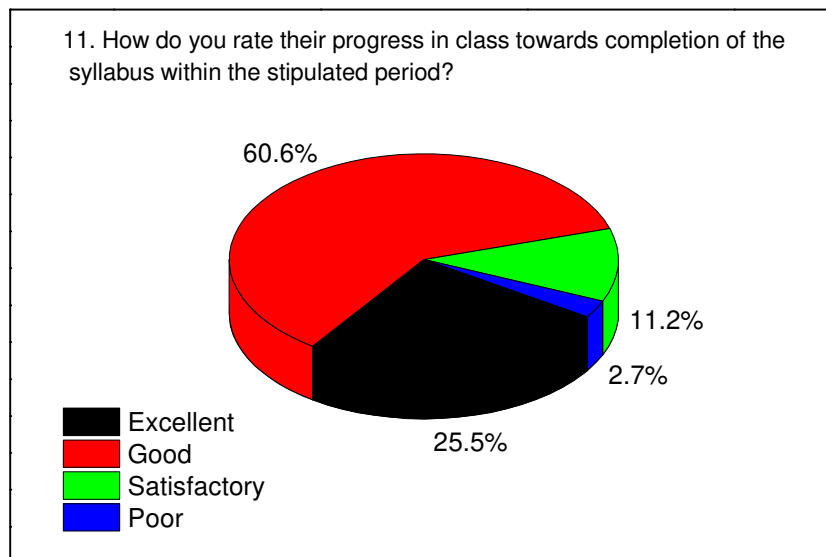
10. How do you rate their knowledge base?

	Excellent	Good	Satisfactory	Poor
%	41.5	53.2	4.3	1.0



11. How do you rate their progress in class towards completion of the syllabus within the stipulated period?

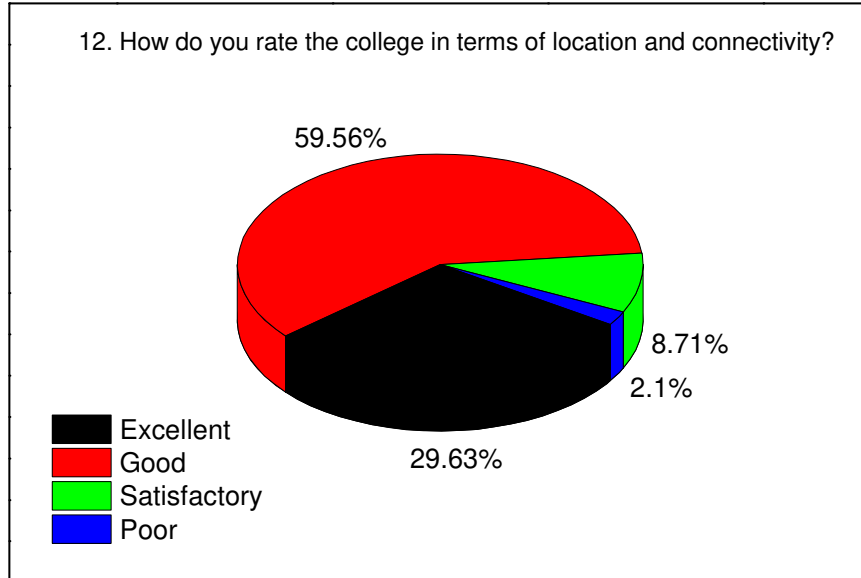
	Excellent	Good	Satisfactory	Poor
%	25.5	60.6	11.2	2.7



Parents/Guardians' Assessment of the college

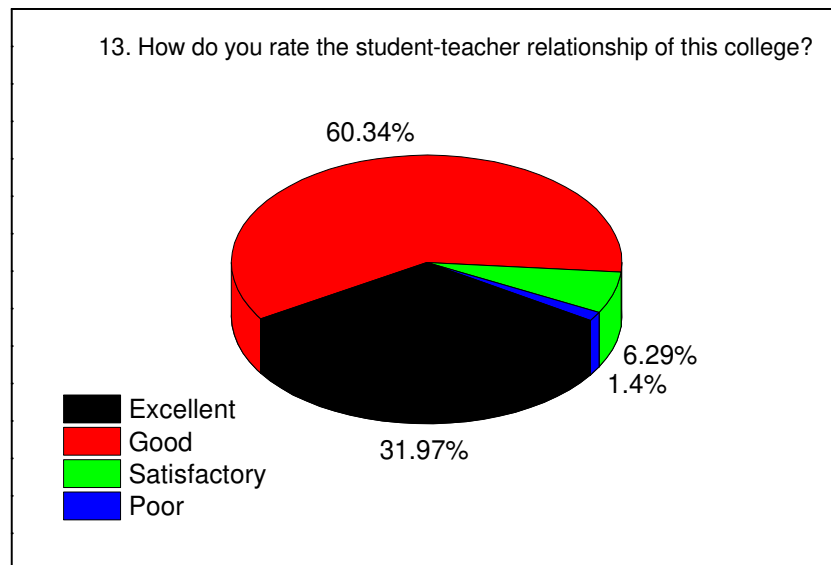
12. How do you rate the college in terms of location and connectivity?

	Excellent	Good	Satisfactory	Poor
%	29.63	59.56	8.71	2.1



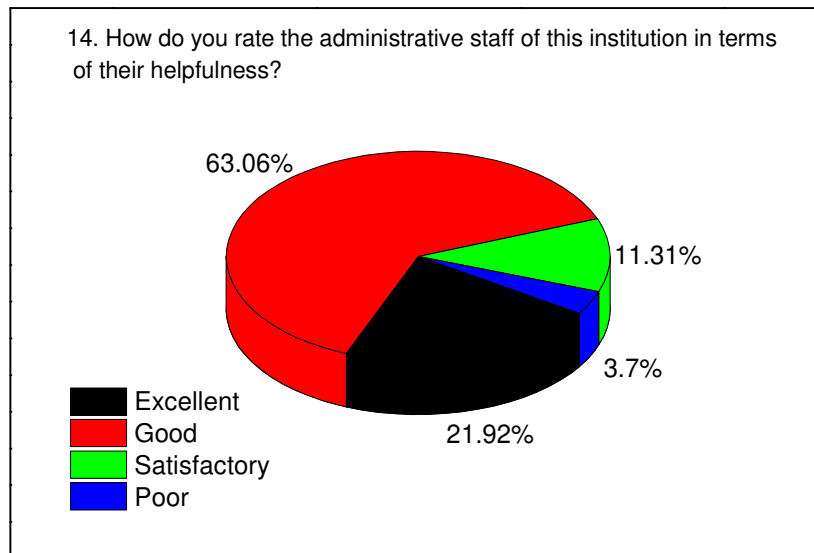
13. How do you rate the student-teacher relationship of this college?

	Excellent	Good	Satisfactory	Poor
%	31.97	60.34	6.29	1.4



14. How do you rate the administrative staff of this institution in terms of their helpfulness?

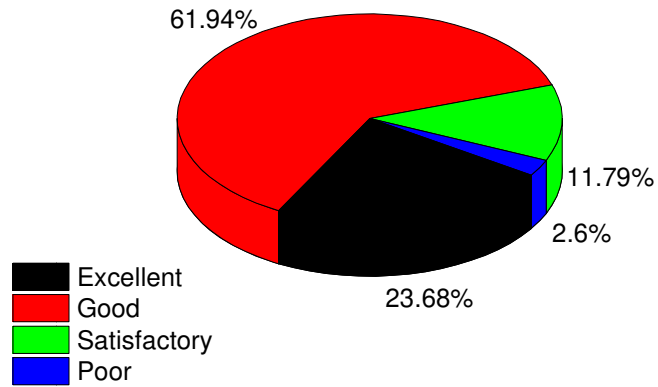
	Excellent	Good	Satisfactory	Poor
%	21.92	63.06	11.31	3.7



15. How do you rate the role of the college in encouraging students in extra-curricular and co-curricular activities?

	Excellent	Good	Satisfactory	Poor
%	23.68	61.94	11.79	2.6

15. How do you rate the role of the college in encouraging students in extra-curricular and co-curricular activities?



General Comments

- Teachers can inspire an uninterested student to become engrossed in learning. They can motivate them to participate focus and even bring introverted students out of their shells. In this case our college is really good.
- Everything is perfect but when the offline mode will be started that might be more satisfied to all.
- All the teachers are very cooperative with the students.

(Dr. Sonali Banerjee Jash)

Principal

Netaji Nagar Day College

Principal
Netaji Nagar Day College
Kolkata - 700 092